

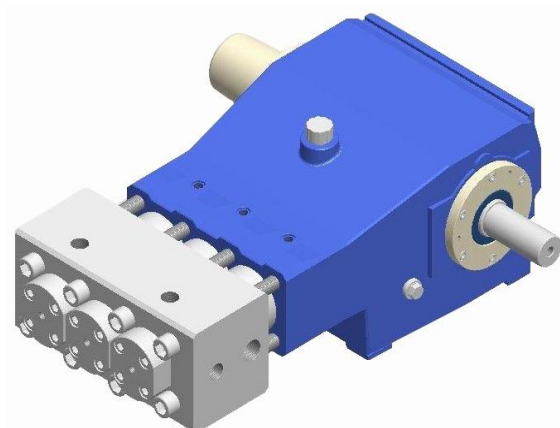
HIGH PRESSURE PLUNGER PUMP

PB Series

Max. Pressure 480 kg/cm² (6830 psi) @ min. Flow rate 22 lpm (5.80 gpm)
Max. Flow rate 55 lpm (14.50 gpm) @ max. Pressure 240 kg/cm² (3415 psi)

Salient Features

- Field proven design. Easy field maintenance.
- Forged SS 304 fluid end construction.
- Rigorously Subjected to full load testing.
- Manufactured on state of the art machinery.
- Heavy duty construction, light in weight.
- In line suction & discharge valve assembly.
- Splash lubrication.
- Available direct couple @1000 rpm for 50Hz (Not 60Hz) or pulley – belts drives @1500 rpm
- Available @ with electric motor / diesel engine.



Performance Chart

Model	SPM	Flow lpm (gpm)	Max. Rated Pressure-kg/cm ² (psi)			
			20 HP	25 HP	30 HP	40 HP
PB-18	950	30 (7.9)	270(3840)	-	360(5120)	*500(7110)
	730	22 (5.8)	320(4550)	400(5690)	480(6830)	-
PB-20	950	35 (9.2)	195(2770)	245(3485)	300(4265)	*390(5545)
	730	27 (7.1)	250(3555)	315(4480)	380(5405)	-
PB-22	950	43 (11.3)	160(2275)	200(2845)	240(3415)	*320(4550)
	730	33 (8.7)	210(2985)	260(3700)	320(4550)	-
PB-25	950	55 (14.5)	125(1780)	155(2205)	190(2700)	*240(3415)

Specification

- Plunger Stroke: 40 mm
- Max. plunger speed: 1.26 m/sec. @ 950 spm
- Plunger force: 12.5 kN (1274 kgf)
- Inlet Pressure min./max.: 2-3 bar
- Oil Type: 15W 40
- Oil capacity: 4 ltr.
- Max. Liquid Temp.: 70 °C (160°F)
- Discharge Connection: ½" BSPF
- Suction Connection: ¾" BSPF
- Medium: Clean water

Note: All flows are based on 100% volumetric efficiency. Volumetric efficiency will be ≥ 85%.

We offer various types of systems

- Stationary unit
- Mobile unit
- Road going trailer
- Mobile unit with diesel engine
- Road going trailer with electric motor
- All unit available in 4 side cover or canopy on request

HIGH PRESSURE PLUNGER PUMP

PB Series

Max. Pressure 480 kg/cm² (6830 psi) @ min. Flow rate 22 lpm (5.80 gpm)
Max. Flow rate 55 lpm (14.50 gpm) @ max. Pressure 240 kg/cm² (3415 psi)

Power End

1. Main Body (Crank Case)

Main body in grey iron casting FG-260. With Honned surface finish bore.

2. Crankshaft

Spheroidal Graphite Iron: Crankshaft is made of nitrated, hardened and tempered Spheroidal Graphite Iron casting.

3. Connecting Rod

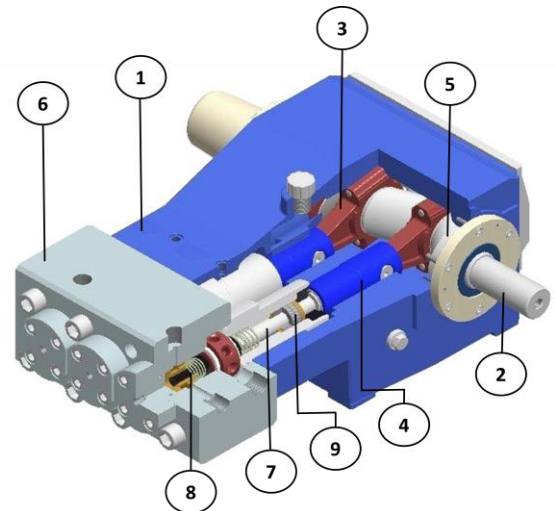
Alloy Steel: Forged steel connecting rods with antifricition bearings. Heavy pin area construction, for added load strength.

4. Piston (Cross Head)

Alloy Steel: Alloy steel construction for hard surface coating and super finish.

5. Bearing

Oversized for maximum life and load disbursement. Self-alignment roller bearing enables it to handle 26% more load than other pumps.



Fluid End

6. Liquid End (Cylinder)

Stainless Steel: Liquid end is made of high corrosion resistant forged S.S.304.

7. Plunger (Ceramic / Tungsten coated)

Primarily composed of ceramic coated or Tungsten coated. Surface roughness is extremely good i.e. <0.2 Ra.

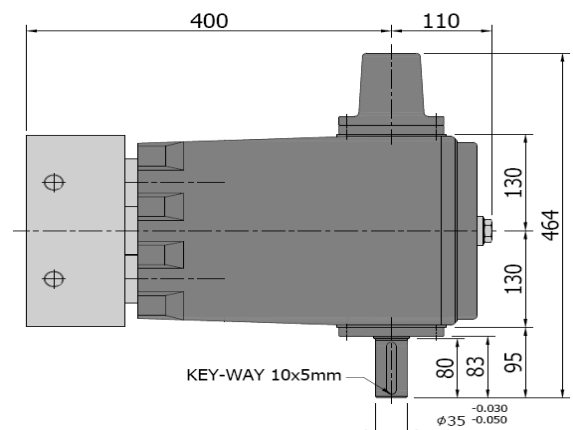
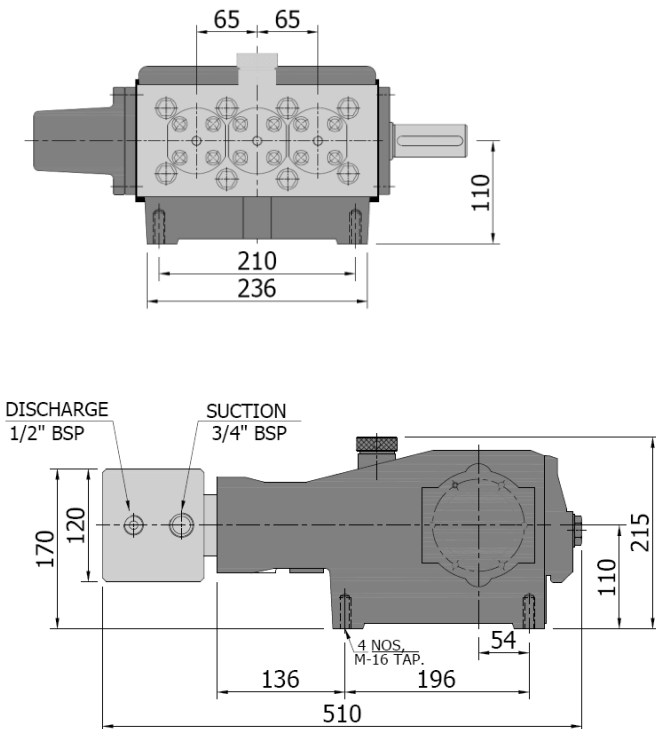
8. Complete Valve

Stainless Steel: Valves made stainless steel for hardened & anti corrosion hard surface coated for long life. High volumetric efficiency valves operate at 95% efficiency plus.

9. Plunger Seal

PTFE Aramide rope: "V" style strong and tightens under load or Aramide fiber yarn packing for high compressive & tensile strength ensure effective sealing.

PB Series - Dimension



All dimensions are in mm
Approx weight of bare pump: 85 Kg

PressureJet Systems Pvt. Ltd.

62/13, Phase-1, GIDC, Vatva, Ahmedabad-382445. Gujarat, India

Phone: +91-79-25830762 / 25835598

Email: sales@pressurejet.com

URL: www.pressurejet.com