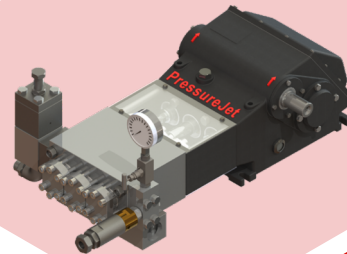
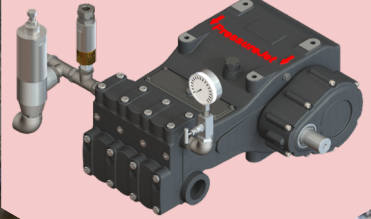
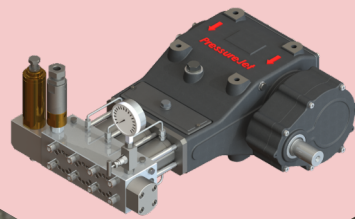


MARKET LEADER IN THE SEWER JETTING PUMPS



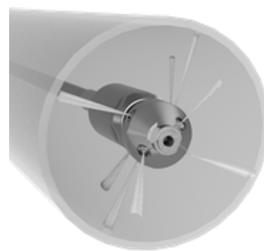
PressureJet
EXPLORE THE WATER POWER

USE THE MOST DEPENDABLE AND
ECONOMICAL SEWER JETTING PUMP
AND SAY NO TO MANUAL
SCAVENGING.

**HAWK
Series**

**MADE
IN
INDIA**

**WIDEST PRODUCT
RANGE IN THE MARKET**



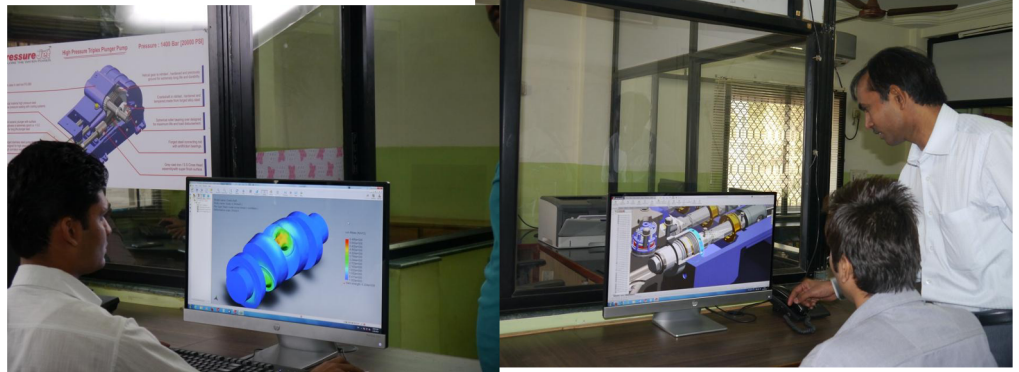
FLOW RATE
MIN. **14 LPM** TO
MAX. **70 LPM**



ABOUT PRESSUREJET

PressureJet Systems Pvt. Ltd. was established in 1996 in Ahmedabad, India. PressureJet (An ISO 9001:2015 certified company) is a leading manufacturer of high pressure triplex plunger pumps and relevant accessories. These pumps are most suitable for Sewer jetting applications. Today, PressureJet has a work force of more than 100 dedicated people. We have 70,000 Sq. ft. area in Asia's premier industrial estate in Ahmedabad. Out of which, 38,000 Sq. ft. area has been allocated for manufacturing activities.

DESIGN & DEVELOPMENT



PressureJet has an in-house Design & Development Department that continues strives to design pragmatic and cost-effective solution that fulfil customer's needs. It is equipped with six separate workstation with licensed modelling tools like SolidWorks 3-D software and has machine design analysis capabilities.

The Design and Development department of PressureJet is highly passionate about innovation and creating cutting edge products for clients. We have a team of highly qualified and passionate individuals who are always ready and eager to resolve any customer issues. This, along with our state-of-the-art infrastructure makes for one of the most advanced and dedicated Product Development department in the industry.

BARE PUMP ASSEMBLY

We don't simply talk about engineering, we put it in action, and this reflects in every aspect of our business. High pressure pumps are similar to engines in a lot of ways and should ideally have a dust free assembly shop, like the one at PressureJet. Ours is the only engineering company, after Toyota and Ford Motors, to use the highly sophisticated and very accurate Atlas Copco CNC Torque Wrench to assemble the pumps. In addition, we have developed in house some very special and highly accurate fixtures that ensure highly accurate assembly of pumps.



PRODUCTION FACILITY



The high-pressure pump manufacturing process requires manufacturing extremely high-quality components, at comparatively low volume.

Further, the high-pressure pump mechanism is similar to an engine and has a crank-shaft, connecting road, crank-case etc... And it converts rotary motion into reciprocating motion similar to an automobile engine. This necessitates use of components that have very high dimensional accuracy/smooth surface finish.

Today, PressureJet has world-class, state-of-the-art, highly accurate and extremely Rugged branded machinery that ensure consistent manufacturing of very high precision critical components of high pressure pumps, which are at par with international quality. But then again, unlike most of other manufacturers, we don't want you to take us at face value. Adjectives can barely scratch the surface of what we do here at PressureJet. We are engineers, and we deal in facts and figures.

QUALITY CONTROL



PressureJet is equipped with the most advanced quality checking equipment among all high pressure plunger pump manufacturers in India. This enables the company's quality to stand head and shoulders above competitors. PressureJet believes in maintaining international Quality standards for its products.

To the end, the company has invested over INR 10 million in establishing its Quality Checking department and checks all critical precision engineering components of the pumps in a controlled environment. It currently uses 257 sophisticated and different quality checking instruments across the entire manufacturing process-right from procurement of raw materials to final inspection and testing of pumps before dispatch.

PressureJet is the only High Pressure-Pump manufacturing company in India that has the highest number of quality checking instruments that are procured, maintained and regularly used to ensure.

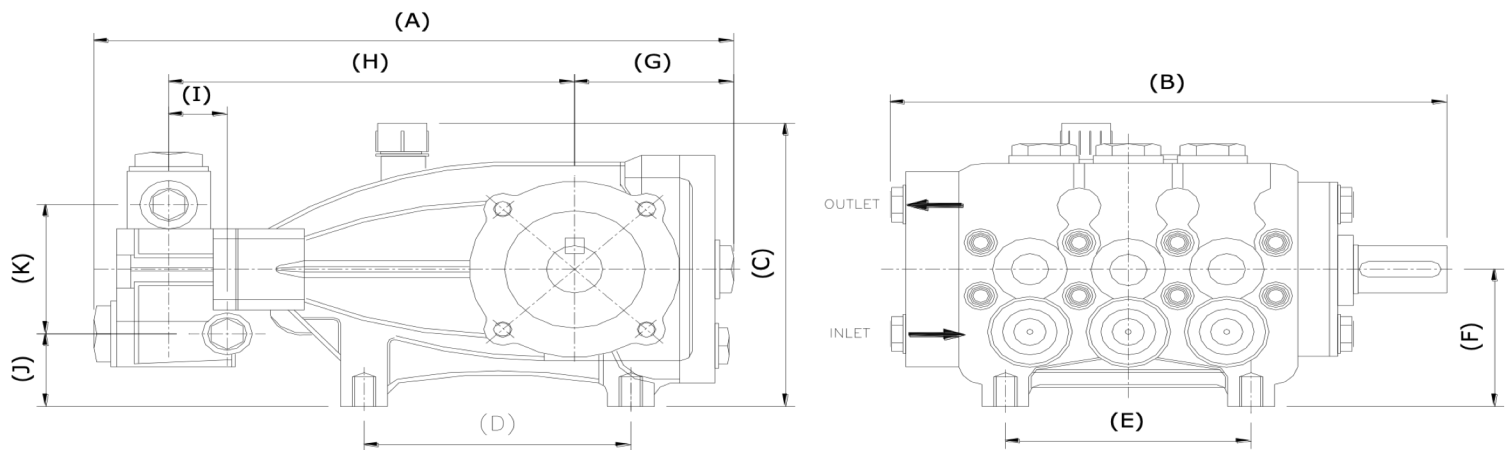
SALIENT

FEATURES

- Field proven design.
- Forged Brass fluid end construction with high strength.
- Rigorously Subjected to full load testing.
- Manufactured on state of the art machinery.
- Light in weight & Heavy duty construction with Continuous duty model.
- Splash lubrication.
- Available direct couple 1750rpm drives.
- Easy Field Maintenance.

HAWK SERIES

GENERAL ARRANGEMENT DRAWING



MODEL	A	B	C	D	E	F	G	H	I	J	K
NHD1415R	250.5	213	135	80	90	60.5	68.5	140	5	30.5	56
NPM1525R	273.5	238	144.5	90	105	70	68	173.5	25	37	66
NMT2120R											
NLT3020IR	333	248	168.5	105	145	82	81.5	204.5	12	42	77
XLT4017IR	314	263	168.2	145	105	82	-	217.5	28	35	87
XLT5415R											
XXT7015IR	344	263	168.5	145	105	82	-	198.5	10	35	91

MODEL

SELECTION CHART

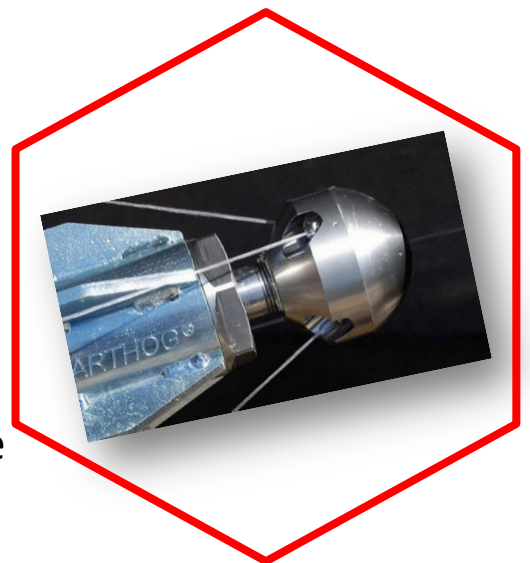
PUMP SERIES	MODEL	PUMP SPEED	FLOW RATE IN LPM	PRESSURE IN BAR (ENGINE H.P.)		
HAWK	NHD 1415 R	1500	14	150 (8)	100 (5.5)	80 (5)
	NPM 1525 R		15	250 (15)	180 (10)	140 (8)
	NMT 2120 R		21	200 (16)	180 (15)	130 (11)
	NLT 3020 IR		30	200 (23)	155 (18)	125 (15)
	XLT 4017 IR		40	170 (26)	140 (23)	125 (15)
	XLT 5415 IR		54	150 (28)	130 (27)	100 (21)
	XLT 7015 IR		70	150 (32)	130 (28)	100 (27)



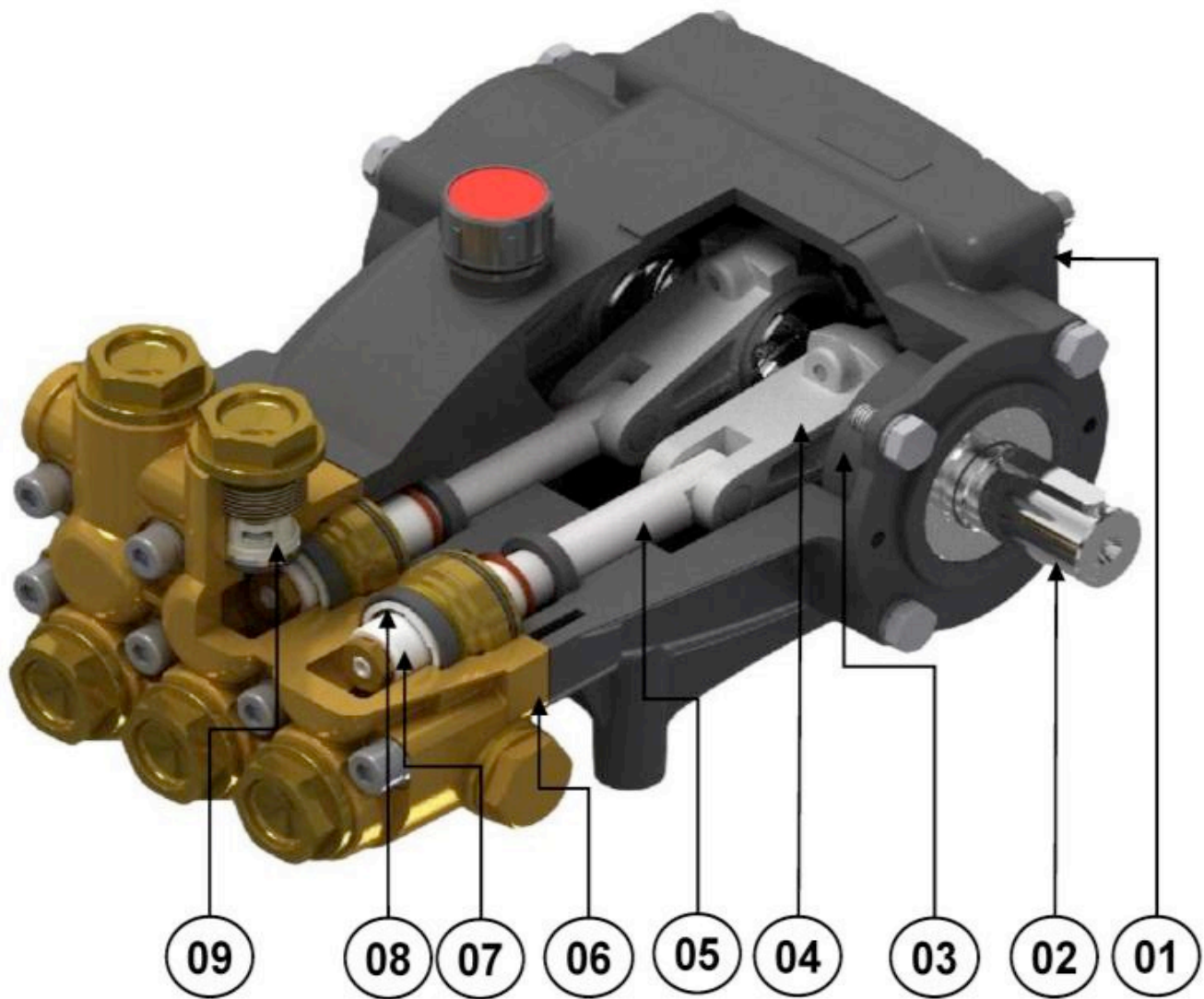
SEWER JETTING

APPLICATION

- Cleaning large sewage line.
- Removing giant clogged in the drainage line.
- Maintaining the drainage system & gutter lines.
- For removing the deposited scale in the drainage.
- For providing a clean & hygienic maintenance
- Efficient & Effective

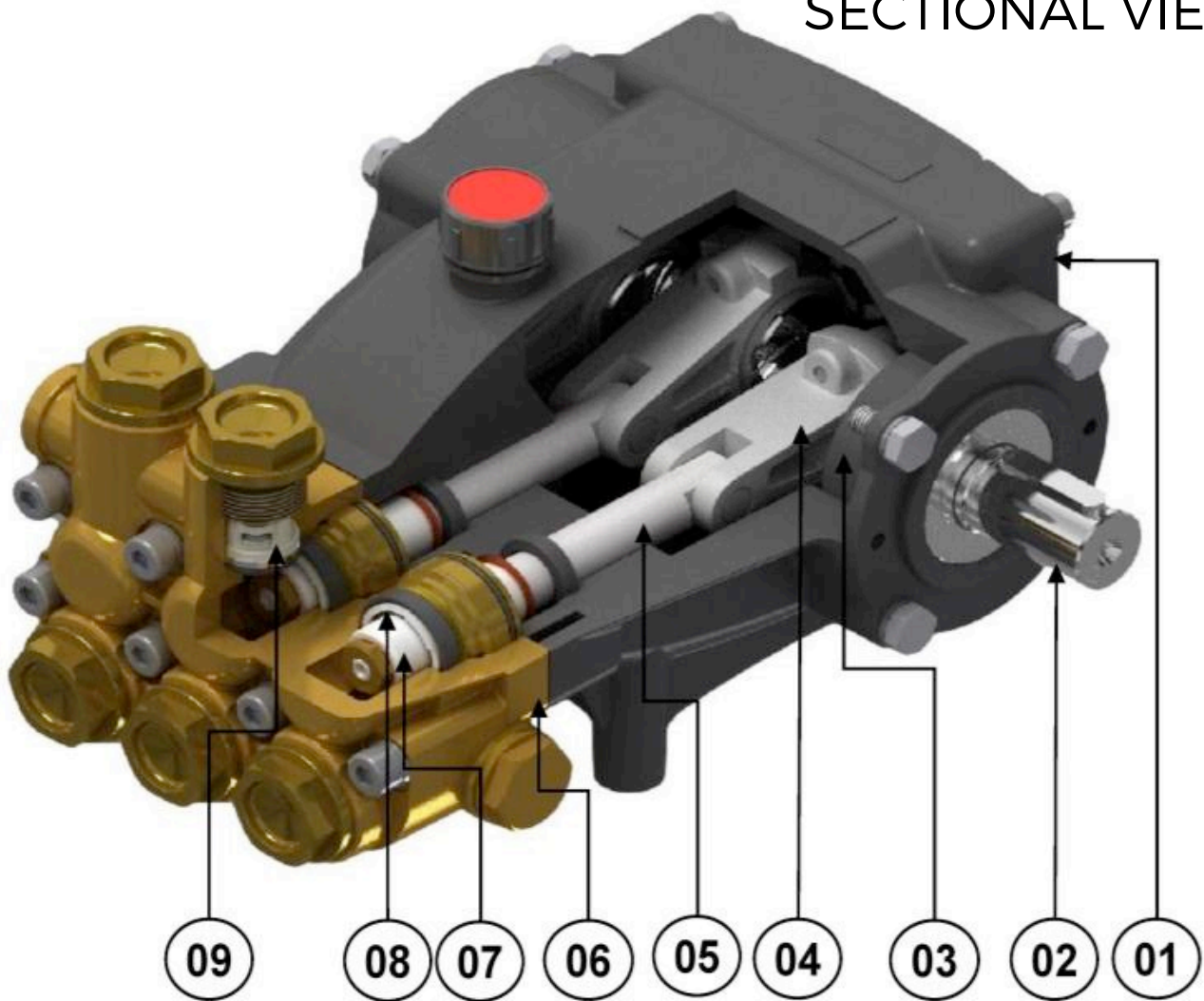


CROSS SECTIONAL VIEW



1. **Crank Case:** Crank Case made of High Strength Aluminum Pressure Die Casting, with fit led anti friction bush.
2. **Crankshaft:** Crankshaft is made of Forged Alloy Steel, with Hardened & Ground.
3. **Bearing:** Oversized for maximum life and load disbursement. Taper roller bearing enables it to handle 26% more load than other pumps.
4. **Connecting Rod:** Forged Aluminum connecting rods with antifriction bearings. Heavy pin area construction, for added load strength.

CROSS SECTIONAL VIEW



5. **Piston (Plunger Rod):** Stainless Steel Construction for hard surface coating and super finish.

6. **Pump Head(Manifold Housing):** Pump head is made of High Strength Forged Brass.

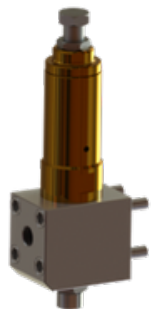
7. **Plunger:** Primarily composed of High Finish Solid Ceramic Plunger and Surface roughness is extremely good i.e. $<0.25Ra$ for less wear of Plunger seal.

8. **Plunger Seal:** Durable Fiber Impregnated Buna-n Seal packing (Make Parker, Germany) for high compressive & tensile strength ensures effective sealing.

9. **Complete Valve:** Valves made of Stainless Steel, anti-corrosion hard surface coated for long life. High volumetric efficiency, valves operate at more than 95% efficiency.

ACCESSORIES

PRESSURE REGULATING VALVE



REGULATE OUTPUT PRESSURE AS REQUIRED
BYPASS EXCESS WATER

SCREEN FILTERS



SCREEN FILTERS USED FOR FILTER WATER

WG & WD CLASSIC NOZZLE



CONNECTION:- 1" OR 1-1/4" NPT / BSPP
INLET

FLOW RATE:- 303-454 LPM

PRESSURE:- 83-345 BAR

WGR MAGNUM



CONNECTION:- 1" OR 1-1/4" NPT OR
BSPP

PRESSURE:- 83-345 BAR

FLOW RATE:- 189-303 LPM

EXTENDED LIFE, REDUCED DOWNTIME

WH CLASSIC NOZZLE



CONNECTION:- 1/2" OR 3/4" NPT OR BSPP
INLET

FLOW RATE:- 38-189 LPM

PRESSURE:- 83-552 BAR

DESCALING HEAD AVAILABLE

WS CLASSIC NOZZLE



CONNECTION:- 1/2" NPT / BSPP INLET

FLOW RATE:- 30-76 LPM

PRESSURE:- 83-345 BAR

WHIP HOSE, JOINTED INLET AND DIRECT CONNECTION
AVAILABLE

IMPORTANT NOTE:

OWING TO CONTINUOUS R & D, ANY TECHNICAL DETAILS & SPECIFICATIONS MENTIONED IN THIS CATALOG ARE LIABLE TO CHANGE ANYTIME. ALL RIGHTS RESERVED TO PRESSUREJET. FOR LATEST INFORMATION & MORE DETAILS, PLEASE VISIT OUR WEBSITE.

OUR WEBSITE IS FULLY INFORMATIVE, EXHAUSTIVE, AND COMMUNICATIVE. IT IS DESIGNED TO PROVIDE MAXIMUM INFORMATION IN THE MOST PRECISE FORM TO HELP OUR VALUED CUSTOMERS TO TAKE A QUICK AND RIGHT DECISION.

CALL US ON

+91 93760 22358

+91-79-25830762/ 25893868

OR WRITE TO US AT

sales@pressurejet.com

OR VISIT AT YOUTUBE

[PressureJet YouTube.](#)

www.pressurejet.com

ADDRESS

PRESSUREJET SYSTEMS PVT. LTD.

62/13, PHASE-1, VATVA GIDC

AHMEDABAD – 382 445, GUJARAT, INDIA