

# CATALOGUE CUM QUOTATION

## PJS 17350 (50 Hz)



Discount  
Available

PRESSURE: 350 BAR (5000 PSI)

FLOW RATE: 17 LPM (5.4 GPM)



# HIGH PRESSURE CLEANER

## OPEN CHALLENGE

**Not ONE Indian manufacturer can match the following BASIC USPs of PressureJet!!!**

1. We test each model for 500 hours of rigorous, continuous duty performance before it is introduced in the market. All our pumps undergo rigorous, continuous test at full test parameters for 500 hours, to ensure trouble free and a long life of our pumps in the field. PressureJet can produce proof of such tests, no other manufacturer can! More than 90% manufacturers do not have a test bench where they can take such test!!

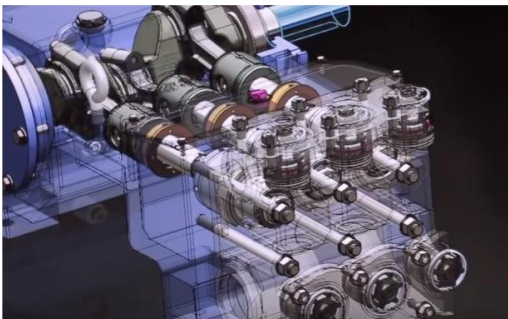


2. Thoroughly check each component of DIFFERENT pumps and accessories, using over 257 quality checking instruments including CMM. No other manufacturer can claim to have such variety of Quality checking instruments, which are essential to ensure technically correct products.

3. PressureJet implemented Oracle EBS 12.1.3. There are innumerable features which many other software do not have. One of the features is: 80% Purchase Orders for items that go in your pump are sent automatically. Less human intervention means faster processes, correct and timely purchases, and reduced employee cost. This is the reason why PressureJet is very competitive in spite of being No. 1 in Quality.



4. Incorporate "BLIND QUALITY CONTROL" feature that prohibits inspection team access to data on quality checks. Ensures 100% quality deliverance for client, reduces overall costs.



5. Use Work Stations with licensed 3-D Solid Work Software. Increases accuracy through better designs, reduces costs through increased productivity and guaranteed lab test design parameters, which saves unbelievable resource cost on the account of Trial and Error.





6. Assemble your pump in a totally dust-free environment to which ensures a long life of your pump. In case the assembled pump has tiny dust particles, you can't even imagine that how much it will cost you in the long run

7. PressureJet is probably the only Indian High PressureJet Pump manufacturer that carries a million-dollar inventory. For this reason, you don't need to worry about in-time delivery of spares when you exhaust your inventory!!!

8. Use state-of-the-art Atlas Copco make electric torque wrench to tighten all bolts in your pump. Ensures perfect fitting of all parts of your pump. This ensures long life of parts. This is one of the reasons, PressureJet is the only supplier which insists customer to opt for 24 hours continues duty test, before finalizing the order and committing your major investment. No other High PressureJet Pump manufacturer in the world uses this highly sophisticated, latest tool.



9. Provide online access to view the pump performance during Inspection. Enables you to view the actual performance of your pump through IP cameras in real-time.



10. Lowest Price Guarantee: To a Genuine buyer, PressureJet guarantees that in case you find our prices higher than any other manufacturer, we shall offer you 1.25 times more discount than the price difference. For example, in case our price is Rs. 40,000/- and another manufacturer's price is Rs. 38,000/-, then we shall offer you a discount @ 1.25 times of the difference in value i.e. Rs. 2,500/-. This guarantee is valid for 3 months even after the date of dispatch. Should you need, PressureJet shall be happy to submit this guarantee on a Judicial Stamp paper.

# About PressureJet™



- ✓ Established in 1996 in Ahmedabad, India.
- ✓ An ISO 9001:2015 certified company
- ✓ Manufacturer of high pressure, positive displacement, reciprocating triplex plunger pumps and relevant accessories.
- ✓ More than 85 dedicated people.
- ✓ 11000 Sq.ft. area in Asia's premier industrial estate in Ahmedabad.



**MORE THAN 5000 CUSTOMERS WORLD WIDE...**

# TYPES OF SYSTEMS



**Base Frame  
Mounted System**



**Frame Mounted System  
with Control Panel**



**Base Frame  
Mounted System with Diesel Engine**



**Trolley Mounted System  
Close Cover**



**Trolley With MS Tank**

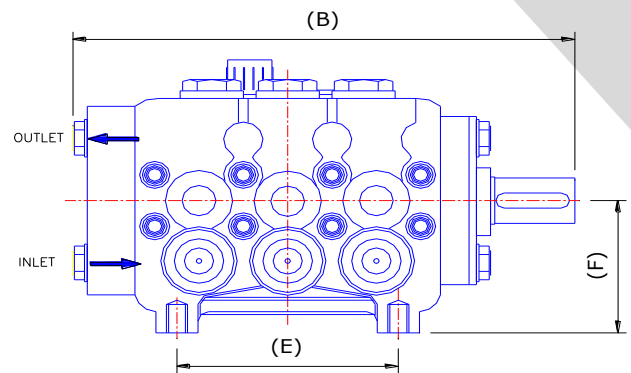
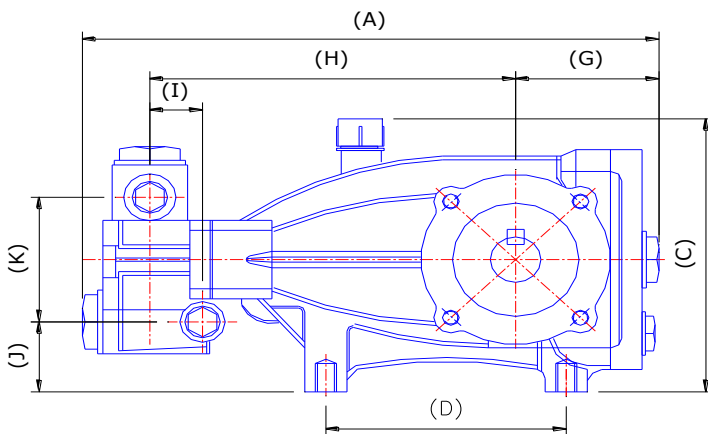
A system means integration of bare pump, and other accessories like base frame or trolley, hoses, different valves, pressure gauge and almost all essential accessories to be fitted, to make a complete module as system, to perform particular task / application with optimum performance and safety.

# PJS 17350

Max. Rated Pressure	350 Bar (5000 PSI)
Max. Rated Flow Rate @ 50 Hz	17 LPM (5.4 GPM)
RPM @ 50 Hz	1450 RPM
Inlet Connection	3/8" BSPF
Inlet Pressure	1 to 2 Bar
Outlet Connection	3/8" BSPF
Working Fluid temp.	60 °C
Oil Grade	20W 40
Oil Capacity	1.2 Litre
Bare Pump Weight	19.5 Kg.
Bare Pump Dimension(mm)	353.5 (L) X 268 (W) X 168.5 (H)

15 H.P.

350 Bar



Model	A	B	C	D	E	F	G	H	I	J	K
PJS 17350	303.5	263	168.5	145	105	82	81.5	244.5	12	40	82

Note : All Dimensions are in mm.



# MODEL SELECTION CHART

S.N.	Item Description	Qty. (Nos.)	Bronze	Silver	Gold	Platinum
1	PJS 17350 Bare Pump	1	●	●	●	●
2	Electric Motor 15 Hp-1500 Rpm-3 Ph-415v-50Hz-IE2, Foot Mounted-(Make:Pressurejet)	1	●	●	●	●
3.1	Base Frame-160M-132M with coupling and Guard	1	✓			
3.2	Trolley with Pin Bush Coupling and Guard	1		✓	✓	
3.3	Trolley and Plastic Tank-100 Ltr. with Pin Bush Coupling and Guard	1				✓
4	28.0320.65 F5 L Plastic Suction Strainer	1	●	●	●	●
5	Pressure Gauge Glycerin Filled 2.1/2"(63mm) SS Dial Bottom Connection-3/8" BSP-700 BAR	1	●	●	●	●
6	High Pressure Needle Valve-3/8" BSP-500 Bar (SS 304)	1	●	●	●	●
7	S-10 Safety Valve	1	●	●	●	●
8	60.1700.00 VB350 Unloader Valve with knob-40 l/min.350 bar	1	●	●	●	●
9	30.2511.00 RL30 Spray Trigger Gun+sw6-40 l/min.310 Bar	1	●	●	●	●
10	High Pressure Cleaning Nozzle Degree - 0 ,Size-04-1/4" NPT (1/4MEG0004)	1	●	●	●	●
11	High Pressure Cleaning Nozzle Degree - 5 ,Size-04-1/4" NPT (1/4MEG0504)	1	●	●	●	●
12	25.1690.40 Ur32 Rotating Nozzle Size-04-1/4" BSPf-350 Bar- D.Yellow	1			✓	✓
13	Rigid Lance 1/4" Sch-80 X 400mm (SS304)	1	●	●	●	●
14	High Pressure Hyd. Rubber Hose 4sp-3/8"X10 Meter (Both Side MS Swivel Female Connection 3/8" BSPF)	1	●	●	●	●
15	Low Pressure Suction Hose 3/4" X 3 Meter (One Side MS Swivel Female Connection 3/4" BSPF)	1	●	●	●	●
16	Low Pressure By Pass Hose 1/2" X 1.5 Meter (One Side MS Swivel Female Connection 1/2" BSPF)	1	●	●	●	●
17.1	Dol Starter-3 Ph-15Hp-415v-50Hz	1	✓	✓	✓	
17.2	Electric Control Panel DOL-15Hp-415v-50Hz	1				✓

18	4 Sq.Mm - 4 Core Pvc Insulated Copper Flexible Cable	10 m	●	●	●	●
19	Lance Adapter 1/4 BSPF X 1/4 NPTF	1	●	●	●	●
TOTAL SYSTEM PRICE (INCL. OF ABOVE ITEMS)			Rs. 1,68,000	Rs. 1,79,000	Rs. 1,83,000	Rs. 1,93,000
Complete system as above with Diesel Engine 18 Hp/1500 Rpm, Self Start instead of Electric Motor		1	Rs. 2,23,700	Rs. 2,42,100	Rs. 2,46,000	Rs. 2,47,600
Complete system as above Electric Motor 15 Hp-1500 Rpm-3 Ph-415v-50Hz-IE2-Flame Proof (Make:Crompton)		1	Rs. 2,07,300	Rs. 2,18,330	Rs. 2,22,250	Rs. 2,32,220

S.N.	Nozzle Options	Qty.	Unit Price (Rs.)	Total Price (Rs.)
1	High Pressure Cleaning Nozzle Degree - 5 ,Size-04-1/4" NPT (1/4MEG0504) -V Jet	1	600	600
2	High Pressure Cleaning Nozzle Degree - 0 ,Size-04-1/4" NPT (1/4MEG0004)-Straight Jet	1	600	600
3	25.1690.40 Ur32 Rotating Nozzle Size-04-1/4" BSPf-350 Bar- D.Yellow	1	3,900	3,900

S.N.	Spares Parts List	Qty./ Pump	Unit Price (Rs.)	Total Price (Rs.)
Spare Parts for Bare Pump PJS 17350				
1	260212 Plunger Seals 16 mm Kit (PX17)	1	3,310	3,310
2	260019 Complete Valve Kit (PX17)	3	2,500	7,500
3	260003 Plunger Oil Seal Kit (NLT,XLT,XXT,PX)	1	360	360
Spare Parts for Unloader Valve				
1	60.1615.24 Spares Kit-VB280-350/4 (VB350)Unloader Valve	1	2,410	2,410
Spare Parts for Gun				
1	30.2519.24 Spares Kit -RI30, Gun	1	1,140	1,140

- Note: 1. We also offer custom design systems, However price of custom design products are not comparable with standard models.
2. Above mentioned spares prices are applicable only when you place its order along with system.



# ACCESSORIES LIST

## SPRAY TRIGGER GUN



A high-pressure gun controls the flow of water from pump to nozzle. Squeezing the trigger permits water to flow through the gun, and releasing trigger shuts off the flow.

## UNLOADER VALVE

This is the main 'safety' in your high pressure cleaner system. The most commonly used is the "pressure actuated" type valve. When the pressure gun trigger is released the valve senses the pressure build up, it diverts the water flow from the pump outlet back into the inlet side of the pump this is called 'bypass mode.' Without this critical component this closed-gun situation would build pressure to the point where it would stall the power source, rupture the gun, hose or even the pump itself.



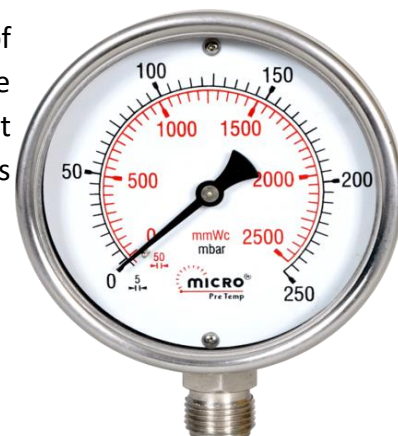
## SAFETY VALVE



Safety valve is very important accessory and it prevents **major accident**, in case of event of any problem because of high pressure built up in line. It is standard on all PressureJet Pumps for the temporary relief of excess system pressure.

## PRESSURE GAUGE

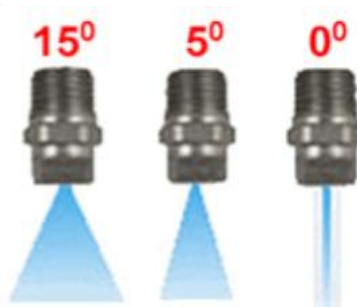
**Glycerin Filled Pressure Gauge**, ideal for dampening the effect of pulsation and vibration. Widely demanded, it has a stainless steel case filled with glycerin to offer protection against harsh environments. It enhances the integrity and reliability of measuring system for long periods under extreme operating condition.



# NOZZLES

## GENERAL INFORMATION

In High Pressure Cleaner System, role of different nozzles is very crucial. The goal is to increase the kinetic energy of the water at the expense of its pressure and internal energy. The nozzle is the restriction at the end of Gun that creates the pressure.



The turbo nozzle is a most unique solution to limitations of the 0° tip conventional nozzle. 0° tip creates the most impact pressure but that is so concentrated. Advantage of turbo nozzle is it spins 0° jet in a circle of 5° or 15° . It is commonly stated that turbo nozzle has double cleaning efficiency.

### Straight Jet Nozzle

- ✓ A straight jet nozzle has a orifice which creates a solid jet with 0° spray angle.
- ✓ Creates a jet possessing very high impact strength.
- ✓ Normally use wherein very hard and thick scales are to be removed.
- ✓ Should be use where the parent material is able to sustain high impact energy. Cannot be used for cleaning delicate items like glass, tiles, etc.

### Angular Jet Nozzle

- ✓ An angular jet nozzle has an orifice which develops jet spray at certain angle e.g. 5° or 15°, etc.
- ✓ Creates a jet having somewhat impact strength.
- ✓ Normally use to clean loose scales or for general washing only.
- ✓ Use while cleaning loose scales and normal dirt from delicate parts like welded joints, glass lining, etc.

Various Applications of Nozzles Video 

## ROTATING/TURBO JET NOZZLES

Turbo-Jet nozzles have been one of the most important accessories developed. These efficient tools provide the power of a zero-degree pattern. The circular motion also adds extra agitation to cleaning tough jobs. They are designed to provide a 200% cleaning efficiency over a 15-degree flat fan nozzle. The precision ceramic orifice and matching seat, along with the high strength forged brass housing; provide a long life accessory with no gears, teeth, or bearings.



## CONVENTIONAL NOZZLES

### 0° Nozzle(Straight Jet)

These pressure washer nozzles produce a pencil point pattern. **There is no fan created so this is not the tip to use when cleaning coverage is desired.** The red tip does deliver the highest impact as it concentrates the pressure into the smallest area. Avoid damaging wood or other fragile surfaces.

This is an ideal tool for cleaning under the deck of a lawnmower, removing caked on mud from equipment, cleaning stains from concrete, masonry, steel and aluminum even removing the grass from cracks in the sidewalk.

### 5° V-Jet Nozzle

These pressure washer nozzles are referred to as chiseling tips. Held at a 45 degree angle you can use it like a scraper to remove peeling paint or any scale. It is also used for other tasks where breaking the bond is harder than average. Of your different pressure washer nozzles you will find yourself using this one the most often when the task is tough.

## STARTER/CONTROL PANEL

A control panel is a flat, often vertical, area where control or monitoring instruments are displayed. In control panel there are many controls like on/off button, Safety Shut down switch, Voltage and Ampere readings. While in DOL Starter only on/off button provided.



Starter



Electric Control Panel

## HIGH PRESSURE RIGID LANCES

For Cleaning applications, a **high pressure rigid lance** provides easy and firm grip for the Operation. A nozzle is attached to the end of the lance.



Note: We also offer up to 1 ,1.5,2 meter long lances.



# TERMS & CONDITIONS FOR PUMP

Packing & Forwarding	<p>Packing &amp; Forwarding charge is the costing of Packing Material, Local Transportation from our Factory to Transporter local Godown, Hamali, Loading-Unloading etc. This is considerable cost to us therefore it will always be charged extra, whenever material is to be dispatched in safely Packing. It will not be applicable when material is to be dispatched in unpacked condition.</p> <p>For domestic packing, P &amp; F @ 3% will be charged extra &amp; For export packing, it will be extra @ 5%.</p>
Freight & Transportation	<p>Unless and otherwise specified, freight charges should be paid by the client only.</p> <p>All Materials will be dispatched from out factory at Vatva, Ahmedabad only.</p> <p>Due to some unavoidable circumstances, neither we pay the freight charges nor we negotiate / decide the suitable transporter/courier, on behalf of any client.</p> <p>In case of full/part payment against dispatch documents/COD, then client has to select transporter/courier from the list of our approved transporter/courier only. In any circumstances or emergency, If client insist to dispatch thru his private vehicle or any local transporter, then terms of payment against dispatch documents/COD will be null &amp; void and client has to pay decided payment before loading of material in vehicle.</p> <p>In case of freight charges in our scope, our decision for the selection of transporter/courier will be final.</p>
Transit Insurance	<p>Transit Insurance will be arranged and borne by customer.</p> <p>If we have to mail dispatch instruction to your insurance company at the time of dispatch, then it will be your responsibility to mail us about their required list of documents and mail id, on which soft copy of documents are to be mailed. Please take confirmation from us in writing about receipt of such important mail to ensure it is received to us.</p> <p>We always pack our material by following best industrial packing. Client has all the right to check the packing at the time of dispatch, if required.</p> <p>We always take photographs of all the material before finally closing the box to ensure that all the material as per packing list is kept inside the box to avoid any possibility of short supply.</p> <p>For any damage/ misplacement / lost / theft of material during transit, client has to claim the loss from their insurance company. PressureJet is not liable to take any responsibility to supply/replace any such item on free of cost basis. In such case, our liability will be limited up to supplying material with special one-time discount.</p>
Inspection	<p>Pre-dispatch inspection at our factory will be provided Free of cost within 4 days of readiness of material.</p> <p>In case of inspection, your confirmation for acceptance of our "Inspection procedure" is required along with Purchase order.</p>

Guarantee	<p>The pump is guaranteed against any manufacturing defect for a period of 12 months from the date of installation or 18 months from the date of invoice, whichever is earlier. Accessories, parts subjected to wear and tear, rubber parts (especially rubber hose and Pressure Gauge) are not cover under any guarantee. For bought out items. i.e. Electric Motor, Starter, Pressure Gauge, Hoses etc. warranty will be transferred as we get from its suppliers.</p> <p>Please note that in case of bare pumps (PressureJet or Hawk Series), it is mandatory for the customer get the bare pump fitted by a well trained and experienced technician. Improper fitment can result in mis-alignment between the shaft of the pump and the motor and may damage the bearings and other moving parts. Any damage caused as a result of such misalignment and/or improper fitting shall not be covered under warranty.</p> <p>For bare pumps of Hawk Series, PressureJet Systems passes on back-to-back warranty offered by the Original Equipment Manufacturer of Hawk Products, LEUCO S.p.A. to its customers. To know more about the warranty terms of Hawk Series of Pumps, please click <a href="http://www.manufacturing-high-pressure-pumps.com/warranty.php">http://www.manufacturing-high-pressure-pumps.com/warranty.php</a></p>
Warranty	<p>For detailed “Warranty” , please click <a href="http://www.pressurejet.com/pages/51/warranty.aspx">http://www.pressurejet.com/pages/51/warranty.aspx</a></p>
Procurement of Accessories	<p>As you have referred, we have listed and furnished the price of each accessory separately. If you wish, you can buy accessories at your own and we shall provide you necessary information to procure those items. Proper assembly of all such items, which are procured by client, will be in client scope only. Assembly charges will be extra for the assembly of any such item by PressureJet.</p> <p>Any item, not confirmed by us in writing as a part of our scope, will always be charged extra. PressureJet is not responsible to supply any such extra item/s on free of cost basis, irrespective of its importance for proper working / safety of pump system or we forgotten to consider the same in our offer by mistake.</p>
Commissioning	<p>About commissioning, we are asked by many customers, who really do not come across this product. In fact, this is a very simple product and after a long experience, we have designed such a quality presentation, which is not only effective but also very easy to understand. 99% of our customers including importers, who buy high pressure triplex plunger pump up to 200 hp, do the commissioning with the help of all these tools.</p> <p>On Site commissioning can be offered on chargeable basis.</p>
Changes In Purchase Order	<p>Orders accepted by PressureJet are not subject to changes or cancellation by Customer, except with PressureJet’s written consent. In such cases where PressureJet authorizes changes or cancellation, PressureJet reserves the right to charge Customer with reasonable costs based upon expenses already incurred and commitments made by PressureJet, including, without limitation, any labour done, material purchased and also including our usual overhead and reasonable profit and cancellation charges from PressureJet’s suppliers.</p>

Scope of Supply	<p>In case of event of order, we assume that your Purchase Order is strictly in line with our Technical &amp; Commercial submission(s) / quotation. In case of any deviation, please attach an annexure - "DEVIATION SHEET", otherwise deviation will not be considered as a part of scope. Deviation, not mentioned separately and requirement / instruction/ request conveyed verbally is not being part of our scope of supply.</p> <p>We shall supply only &amp; only these items and their specifications, which we are mutually agreed upon and mentioned in our quotation.</p> <p>It is obvious that one may have his/her own perception of the quality, aesthetic, technical or any other subject, which is very difficult to accommodate after manufacturing.</p> <p>Any other request to accommodate any extra item in our scope may not be entertained or it will be charged extra considering its possibility and viability for us.</p>
Force Majeure Clause	<p>PressureJet shall not be responsible or liable for any delay or failure to perform any of its obligations if such failure is as a result of circumstances outside its reasonable control, including but not limited to acts of God (including fire, flood, earthquake, storm, weather, hurricane or other natural disaster), war, invasion, act of foreign enemies, hostilities (regardless of whether war is declared), civil war, rebellion, revolution, insurrection, military or usurped power or confiscation, terrorist activities, nationalization, government sanction, blockage, Faulty castings or forgings breakdown, sabotage, embargo, labor dispute, any type of strike, lockout or interruption or failure of electricity or telephone service and PressureJet shall be entitled to a reasonable extensions of its obligations.</p>
Order Cancellation Policy	<p>If the Buyer cancels an Order or refuses to accept delivery of the Goods, then the Buyer will be liable to pay to PressureJet a non-refundable cancellation fee of 30% of the Purchase Price (as per PO). If the Buyer has paid for the Goods, then such cancellation fee will be deducted by PressureJet from any refund.</p> <p>In the event that a Buyer postpones delivery of the Goods for more than 3 days from the date of written intimation by the PressureJet for readiness of material, then the Buyer will be liable to pay to PressureJet a non-refundable holding fee of 2% of the Purchase Price (as per PO) per week on pro- rata basis until the Date of Delivery of the Goods. If the Buyer refuses to accept delivery within 10 days of the Material Readiness Confirmation, then the Purchase Order shall be deemed to be cancelled and the Buyer will be liable pay the cancellation fee @ 30% of PO Value.</p> <p>Above mentioned cancellation charge and holding charge represent a genuine and realistic pre-estimate of PressureJet's losses arising from the cancellation or delay of the delivery of the Goods in those circumstances.</p>
Limitation of Liability	<p>PressureJet will not be liable to the Customer whether in contract, tort (including for negligence and breach of statutory duty), misrepresentation (whether innocent or negligent), restitution or otherwise, for any loss (whether direct or indirect) of profits, claims of whatever kind, business, revenue, or goodwill; any special, indirect or consequential or incidental loss, costs, damages, charges or expenses however arising under these Terms.</p>



	In any case, PressureJet's liability contract, tort (including for negligence and breach of statutory duty), misrepresentation (whether innocent or negligent), restitution or otherwise arising out of the subject matter of the Contract shall not exceed 5% of the Purchase Price of the Goods.
Changes In Purchase Order	Orders accepted by PressureJet are not subject to changes or cancellation by Customer, except with PressureJet's written consent. In such cases where PressureJet authorizes changes or cancellation, PressureJet reserves the right to charge Customer with reasonable costs based upon expenses already incurred and commitments made by PressureJet, including, without limitation, any labour done, material purchased and also including our usual overhead and reasonable profit and cancellation charges from PressureJet's suppliers.
Shipment/ Damages or Shortages in Transport/ Risk	Except for obligations stated under our "Warranty terms", PressureJet's responsibility for goods ceases upon delivery to the carrier (Transporter/ Courier) etc. In the event of loss or damage during shipment, Purchaser's claim shall be against the carrier or insurance company only. PressureJet will, however, give Purchaser reasonable assistance to secure adjustment of Purchaser's claim against the carrier or insurance company. Claims for shortages must be made in writing within Seven (7) days after receipt of goods by Purchaser. If PressureJet does not receive written notification of such shortages within Seven (7) days, it shall be conclusively presumed that the goods were delivered in their entirety.
Jurisdiction	Any dispute shall be subject to Ahmedabad Jurisdiction only.

# ACCOUNT DETAILS

## OUR REGISTRATION DETAILS

Company Identification No.	U29120GJ2006PTC049331
Date of Incorporation of Company	09.11.2006
PAN No.	AAECP0774H
GST No.	24AAECP0774H1ZI
MSME Status & Registration Details	Small Scale Company SSI Registration No. 24-00-12-29234 Date. 03.06.2011

## BANK DETAILS

Beneficiary Name & Address	PressureJet Systems Pvt. Ltd. 62/13, Phase- 1, GIDC, Vatva, Ahmedabad - 382445. Gujarat, India.
Name of Bank	KOTAK MAHINDRA BANK
Bank Address	83/9, GIDC, Phase-1, F road, Vatva, Ahmedabad – 382445 Gujarat, India.
Account Type	OD/Current Account
Account No.	0012539475
Branch Code	2568
IFSC / RTGS Code	KKBK0002568
Swift Code	KKBKINBBXX
Import - Export Code	0802002226

## IMPORTANT INSTRUCTIONS FOR PAYMENT

In case of payment direct deposit RTGS/ NEFT/TT/ Cheque/ IMPS etc.	<p>Whenever you deposit payment directly in our account either by RTGS/NEFT/TT/Cheque or by any other way, then you are requested not to follow any other instruction from unreliable sources (commonly referred to as “hackers”), who may send an fraud E-mail of Bank details from very similar (Probably Not Exact) mail ID &amp; may instruct you to deposit the payment in other bank &amp;/or account name, branch location etc.</p> <p>Do verify our bank details with us before depositing payment. Please note that if you do not follow these instructions and make the payment in any fraud account, then PressureJet will not, in any way, be responsible for any inconveniency that may arise in future.</p> <p>Whenever you deposit payment directly in our account, please intimate us on our mail ID i.e. <a href="mailto:sales@pressurejet.com">sales@pressurejet.com</a> &amp; <a href="mailto:dispatch@pressurejet.com">dispatch@pressurejet.com</a> for convenience on both sides. If no intimation will be received, then your payment will be accounted as “Unidentified” and necessary further action and/or transaction may not be processed.</p>
--	---

# PressureJet<sup>TM</sup> ALSO OFFERS...

PressureJet also offers wide range of pumps/systems for different Applications.

Applications	
Hydro Jetting	Sewer Jetting
Hydro Blasting	Fire Fighting
Hydro Test (With Automation)	High Pressure Cleaner
Wet Sand Blasting	Fogging and Misting

Pump model	Flow Rate (LPM)	Pressure (Bar)	Motor H.P.	RPM (50 Hz)	Inlet Connection (BSP)	Outlet Connection (BSP)	Working Fluid Temp. (°C)	Oil Capacity (Ltr)
NHD 1212 R	12	90	3	1450	1/2"	3/8"	60	0.4
		60	2					
		30	1					
NHD 1415 R	14	140	5	1450	1/2"	3/8"	60	0.4
NPM 1525 R	15	250	10	1450	1/2"	3/8"	60	0.7
		180	7.5					
NMT 2120 R	21	180	10	1450	1/2"	3/8"	60	0.7
		130	7.5					
		90	5					
NLT 3020 IR	30	190	15	1450	1/2"	3/8"	60	1.2
		125	10					
		90	7.5					
XLT 4017 IR	40	170	20	1450	3/4"	1/2"	60	1.2
		140	15					
		95	10					
		65	7.5					
XLT 5415 IR	54	150	25	1450	3/4"	1/2"	60	1.2
		130	20					
		100	15					
		70	10					
XXT 7015 IR	70	150	30	1450	1"	3/4"	60	1.2
		130	25					
		100	20					
		80	15					
		50	10					
PX 1550 IR	15	500	20	1450	1/2"	3/8"	60	1.2
PX 1735 IR	17	350	15	1450	1/2"	3/8"	60	1.2
PX 2150 IR	21	500	30	1450	1/2"	3/8"	60	1.2
XLT 2730 IR	27	290	20	1450	3/4"	1/2"	60	1.2



## TIPS TO ACHIEVE A LONG LIFE OF PUMPS

---

- ✓ The high-pressure suction line must be at least one size higher than the pump connection and it must be flexible.
- ✓ Booster pump is necessary for operating the pump, then 1. suction line supply must be flooded and 2. suction line connection must be from the bottom of water tank.
- ✓ In case booster pump is not a part of the assembled system, then suction pressure must be between 1 bar to 2 bar.
- ✓ Maximum hardness of water should not be more than 100 PPM
- ✓ pH value of water must be between 6.5 and 8.5
- ✓ Water temperature range: 5 °C to 60 °C
- ✓ Ambient water temp. range: 2°C to 43°C
- ✓ The water should not be mixed with any type of liquid or chemical (chlorine, soap, etc....)
- ✓ Only clean, fresh water can be used in the pump. Recirculated water not to be used.
- ✓ The filter must be cleaned at regular intervals. The frequency of cleaning will be depend on water quality. In case the filter is not cleaned regularly, the pump will trip.
- ✓ Iron content in the water should be less than 0.1 ppm
- ✓ Silica level in water should be less than 15 ppm
- ✓ Water turbidity: Maximum 5 NTU (Nephelometric Turbidity Unit)

# PARTIAL LIST OF CLIENTS



**Important Note:** Owing to continuous R & D, technical details and specifications mentioned in this catalogue are liable to change anytime. All rights reserved with PressureJet. For latest Information & more details, please visit our website.

Our Website is fully informative, exhaustive and communicative. It is designed to provide maximum information in most precise form to help our valued customers to take a quick and right decision.

## Call Us

+91 9375022359

+91-79-25830762



## Write to us at

sales@pressurejet.com

## Visit

YouTube



www.pressurejet.com

# PressureJet

## Address

**PRESSUREJET SYSTEMS PVT. LTD.**

62/13, Phase-1, Vatva GIDC

Ahmedabad – 382 445, Gujarat, India